

PROPERTY FOR LEASE



📍 201 FM 3237 Suite 123 Wimberly, TX 78676



📞 512.892.6000

WWW.LIFELONGPROPERTY.COM

MAP & FLOORPLAN



201 FM 3237 Wimberly, TX 78676 Suite #123

AVAILABLE 7/1/25



- 2,227 SQFT.

\$21.00/SQFT. + NNN (\$11.76- includes Utilities)

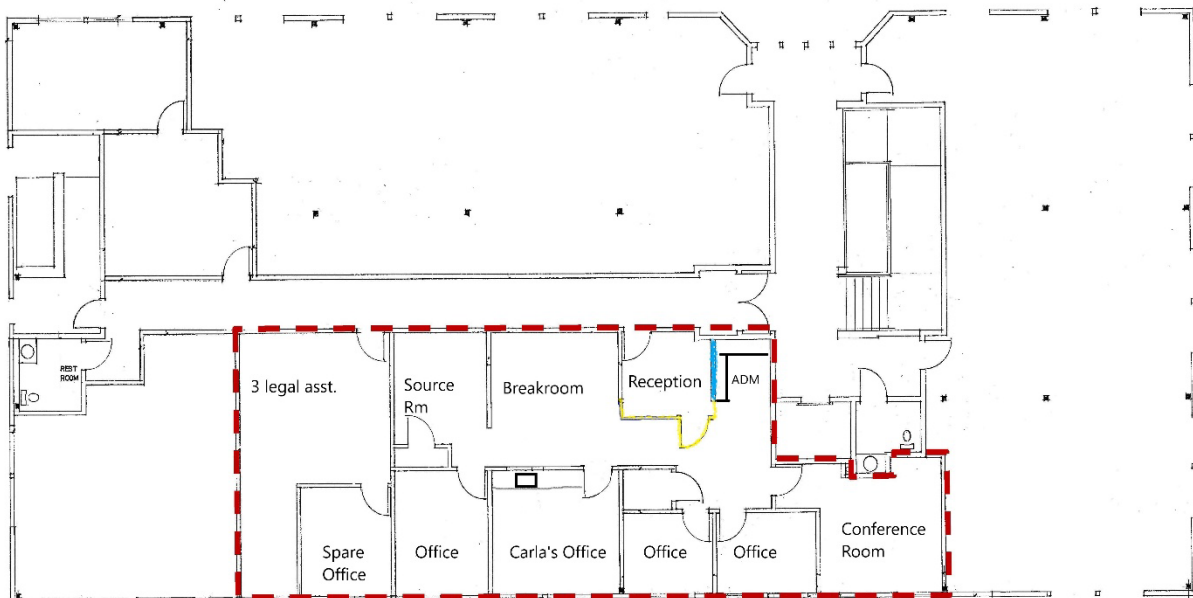
-
- Built in 2014
- 2nd Floor Office with Elevator Access
- Lease Type: Annual
- Office Space



Suite 123 - Approx. 2,227 RSF

Wimberley Medical Plaza

2nd Floor



1. Completely paint the Leased Premises. (Tenant to choose paint cc
2. Remove all corrugate tin off walls and prepare to be painted.
3. Replace 11 old light fixtures to match existing new LED light fixture
4. Construct Wall and Door to close off reception area and cut down plan in yellow and blue.)
5. Relocate existing wall outlets in reception area to below counter.
6. Clean and polish floor only.

 Tarantino

Norman Phillips

Office: 512.892.6000 Cell: 512.348.0191

Email: Norman@hawkinsfamilypartners.com

Life Long Property Mgmt. |

www.Lifelongpropertymanagement.com